



# Maintenance & Breakdown MANAGEMENT



# KEY FUNCTIONAL UNITS OF THE PRODUCTION LIFE CYCLE MANAGEMENT SUITE



Planning  
Management



Resource & Shift  
Management



E-Log Management



Batch Tracking  
Management



Machine Breakdown  
Management

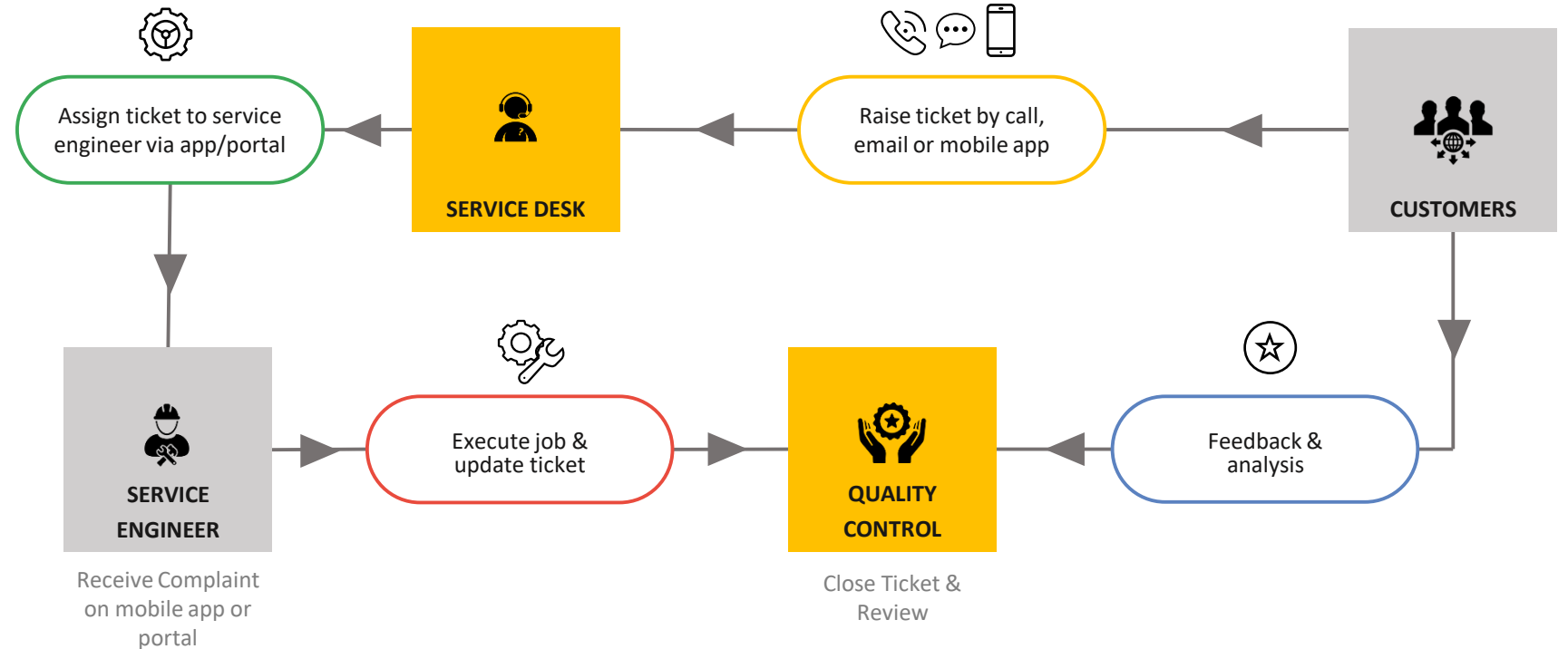


Quality & Audit  
Management





**Maintenance & Breakdown:  
Scheduled and  
unscheduled  
maintenance of  
asset**



**\*Total Productivity Management (TPM), Why why analysis, Corrective Action, Préventive Action (CAPA) and Failure Mode and Effect Analysis (FMEA) are integrated in Xampr workflow**



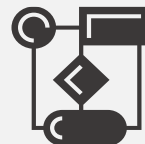
# Innovation on the edge to enable last mile collaboration



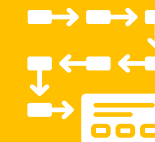
Capture Context



Optimize  
On-The-Fly



Tailor Workflows



Delegate tasks



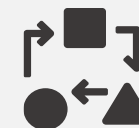
Supervise, Action  
& Audit



Drive  
Accountability



Close Feedback  
Loop



Drive Process  
Adherence



# CO-EXISTS WITH LEGACY SYSTEMS WHILE ACCELERATING THE DIGITAL NATIVE TRANSFORMATION



Dashboard with predictive analytics, AI on user behavior unlocking future insights



AI & Analytics



Workflow Engines for customisation of rapid forms and template development



Customised templates for Big Scenarios



Optimized UX with a mobile-first approach



Integration- calendar, schedules, contact and ad hoc events



Role, responsibility, user and persona based access



Communication - API's, Workflows, e-docs, Enterprise Apps, Database, Servers



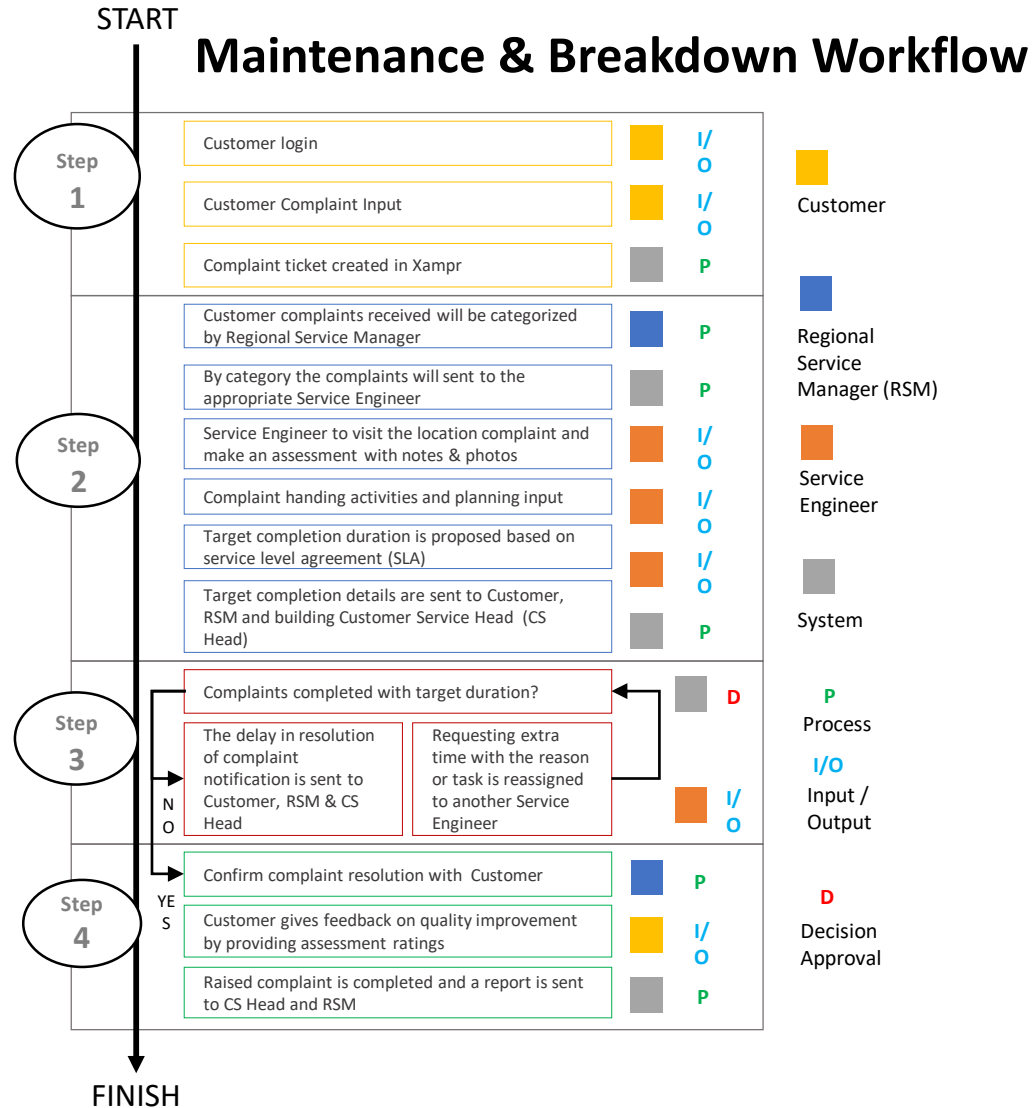
Secure, Reliable and Scalable Platform







# Maintenance & Breakdown MANAGEMENT SUITE: Scheduled and unsecheduled maintenance of asset



# XAMPR

## BENEFITS

### Immediate

- \* Productivity and Cost efficiency
- \* Process Adherence & Accountability
- \* Reliability and availability
- \* Easy to manage, secure & reliable platform

### Short-term

- \* Real-time E2E business execution agility
- \* Agile business processes
- \* Customer centric integrated value chain
- \* Higher service SLA
- \* Single view of operational data and human centric insights

### Mid-term

- \* Agile business model
- \* Competitive edge via E2E innovation
- \* Increased customer and employee NPS
- \* Reduced learning curve of personnel



# ANALYTICS



## Key Features

- Analytics to track output in history.
- Analytics to highlight star workers (Supervisor/Worker/MD)
- Analytics to track breakdown in history.
- Analytics to highlight in-efficiency in history.



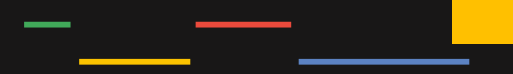




## ROLE BASED USER ACCESS MANAGEMENT

### Key Features

- Ability to create user groups
- Ability to define special access permissions for each user groups
- Ability to show/hide modules based on user group permissions
- Ability to upgrade/downgrade user permissions/access control.



THANK YOU  
INFO@XAMPR.NET

△ 2867

49868  
608

BRAIN STORM NETWORK  
8143  
BRAIN DOWNLOAD

MODEL:428

△ 58768

GMB

△ 5320

△ 7239  
572

